

FoamMix® Flex Dispensing System

Improve Production Efficiency

A reactive and non-reactive adhesive and gasketing polymer foaming system that improves material usage and production efficiency.

Features and Benefits

- Key to Line Operation
- Automatic Density Control
- Intuitive Controller HMI
- Robust Design
- Configurable for variety of materials
- Configurable for variety of temperatures

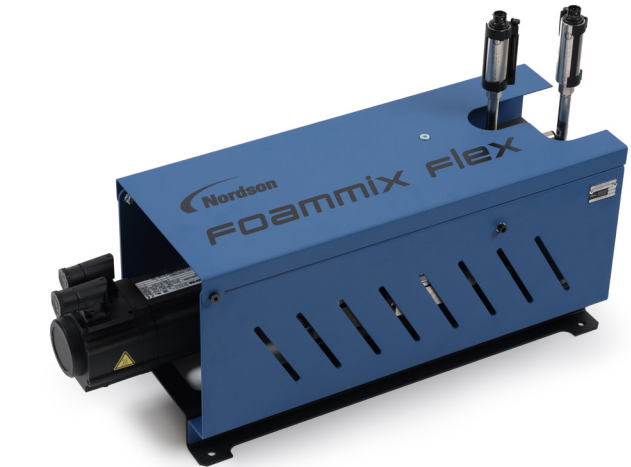
The Nordson FoamMix® Flex dispensing system mixes a variety of reactive and non-reactive materials, either heated or ambient, with inert gas to create a homogeneous mixture.

As the material is dispensed, the gas expands to create a closed-cell foam. The foamed material can be applied in bead form with Nordson® AG900+S applicators or with SureBead® modules and nozzles. These modules can be employed on both pressure-controlled and positive-displacement-controlled applicators.

FoamMix® Flex is suited for a wide variety of form-in-place gasketing applications in automotive manufacturing, eMobility, and other product assembly operations.

Key to Line Operation: The dispensed volume of mixed material follows the production line or robot speed proportionally. This is achieved with a highly responsive Servo Motor drive system in the Pro-Meter® VDK module of the FoamMix® Flex system. It provides an optimum volume of mixed material is delivered to the applicator, allowing the system to respond quickly to production line or robot speed changes.

Automatic Density Control: The automatic control system utilizes multiple sensors to monitor gas ratio. If a change is



detected, the system automatically responds, rapidly and accurately, ensuring that the density of the mix remains consistent throughout the range of speeds for the production line or robot.

Intuitive Controller HMI: The PLC-based controller for the FoamMix® Flex displays a system map and the master controls on the home screen, which allows for a quick scan of important performance indicators and system-wide warnings. The controller features intuitive navigation from the home screen to individual components and warning details.

Robust Design: The patent-pending mixer is designed with ease of maintenance and service in mind, with a low number of service parts and moving components.

Configurable for variety of materials:

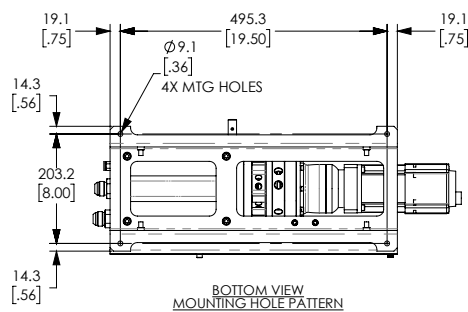
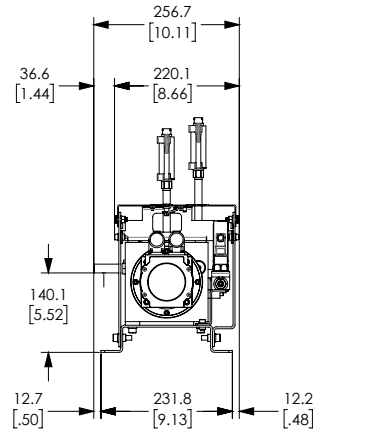
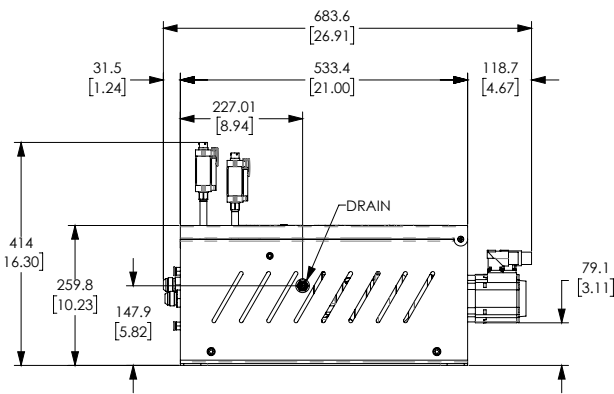
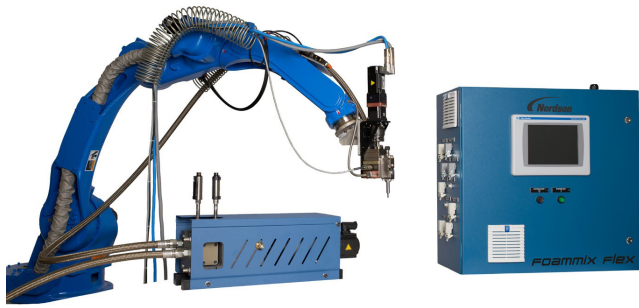
- Hot Melt Adhesives
- RTV Silicones
- Urethanes

Configurable for variety of temperatures:

- Ambient
- Temperature-conditioned
- Heated



FoamMix® Flex Dispensing System Improve Production Efficiency



For more information, speak with your Nordson representative or contact your Nordson regional office.

United States

Duluth, Georgia
(800) 234-0506 **Phone**
(866) 667-3329 **Fax**

Canada

Markham, Ontario
(800) 234-0506 **Phone**
(866) 667-3329 **Fax**

Europe

Erkrath, Germany
(49) 211-9205-0 **Phone**
(49) 211-254658 **Fax**

Japan

Tokyo, Japan
(81) 3-5762-2700 **Phone**
(81) 3-5762-2701 **Fax**

Asia/Australia/ Latin America

Amherst, Ohio
(440) 985-4797 **Phone**
(440) 985-1096 **Fax**

Find us on:



Issued 5/21
© 2021 Nordson Corporation All Rights Reserved. Printed in U.S.A. Nordson reserves the right to make design changes between printings.



Specifications

Holding Capacity	N/A
Melt Rate	N/A
Delivery Rate¹	Up to 70kg/hr for hot melt adhesives Up to 7kg/hr for silicones and polyurethanes
Density Reduction²	< or = 50%
Viscosity Range	1000 - 300,000 mPa·s (cP)
Gas Supply:	Industrial Grade Nitrogen
Minimum Pressure	70 bar (1000 psi)
Dew Point	-70°C (-94°F) for moisture reactive materials, <2 ppm water
Air Supply	Clean dry compressed air 6 bar (90 psig max)
Temperature Range	26°C - 200°C (80° F - 392° F)
Hose outlets	1
Electrical Service -Heaters	Ambient Systems - no heaters Warm Systems - 240VAC Single Phase 50/60 Hz 3200 Watts
Electrical Service -Motor/Controls	240VAC Single Phase 90 Watts
Mixer Dimensions (LxHxW)	660 mm x 406 mm x 254 mm (26 in x 16 in x 10 in)
Mixer Weight (empty)	27 kg (60 lbs)

1 Actual rates can vary depending on adhesive viscosity and other characteristics

2 Depends on required delivery rates and desired foam density